



Hampshire  
County Council

# Participation & Lifelong Learning

- **Hampshire Futures** - statutory responsibility for post 16 education and training participation, and NEET support.
- **Hampshire Outdoors** - providing outdoor education programmes, and health, safety and risk management for school and college offsite activities.
- **Hampshire Achieves** - regulated curriculum programmes for young people and adults, including Supported Internships, Adult & Community Learning, and Apprenticeships.
- **Secure & Specialist Education** - provision in care and hospital settings, and a direct tutoring provision for children medically unwell and/or missing education.



# Secure & Specialist Education

Participation & Lifelong Learning

Update June 2023



# Secure and Specialist - An Overview

## Austen House Hospital

- Low secure psychiatric hospital
- 12 beds for 12 – 18 year olds  
Stays generally exceed 6 months
- Every YP is sectioned and considered a risk to themselves

## Bluebird House Hospital

- Medium secure psychiatric hospital
- 16 beds for 12 – 18 year olds  
Stays generally exceed 6 months
- Every YP is sectioned and considered a risk to themselves and others
- Some YP held under Ministry of Justice restrictions and potential future development of a PICU

## Leigh House Hospital

- Tier 4 general adolescent unit – with eating disorder specialism
- 10 beds for 12 – 18 year olds  
10 place day programme starts November
- Inpatient stays tend to be 12 weeks  
Day patient programme will be 8 weeks
- Some YP may be sectioned but most are informal patients

## Swanwick Lodge

- Secure residential children’s home
- 10 bed for 10 – 17 year olds  
Stays generally reach 6 months
- Every YP is held under a Deprivation of Liberty order due to them being a risk to themselves or others

## Future You

- Innovative hybrid tutoring provision – both online and in person
- Secondary age learners  
Intervention lasts approx. 12 weeks and aims not to exceed 132 hours
- Referrals made by Schools, Virtual School, Social Care and SEND
- Programmes built around the individual needs

# Young People Supported 2022-2023

Setting	Pre 16		Post 16		Total
	Hampshire	Non - Hampshire	Hampshire	Non - Hampshire	
Austen House	0	1	4	12	17
Bluebird House	0	1	1	8	10
Leigh House	5	1	16	0	22
Swanwick Lodge	2	5	3	1	11
Future You	159	0	23	0	182
<b>Totals</b>	<b>166</b>	<b>8</b>	<b>47</b>	<b>21</b>	<b>242</b>

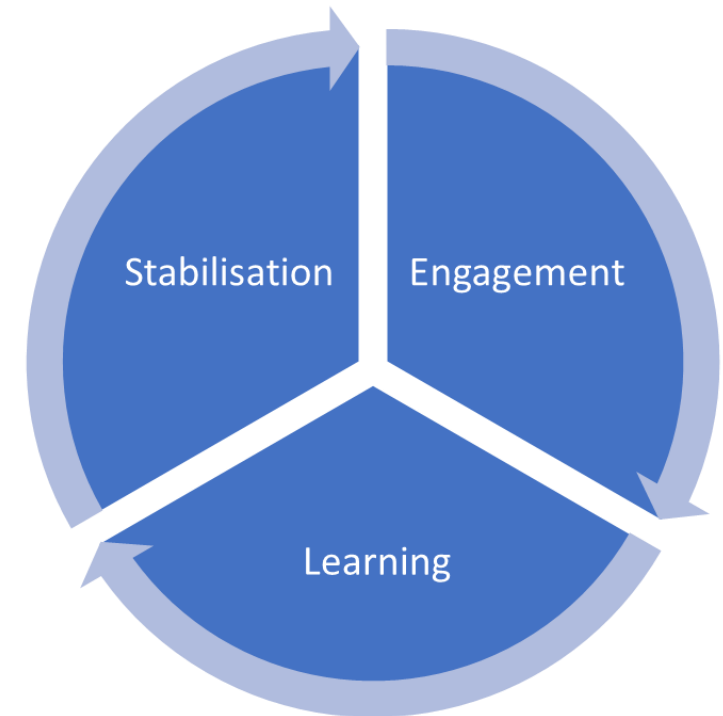
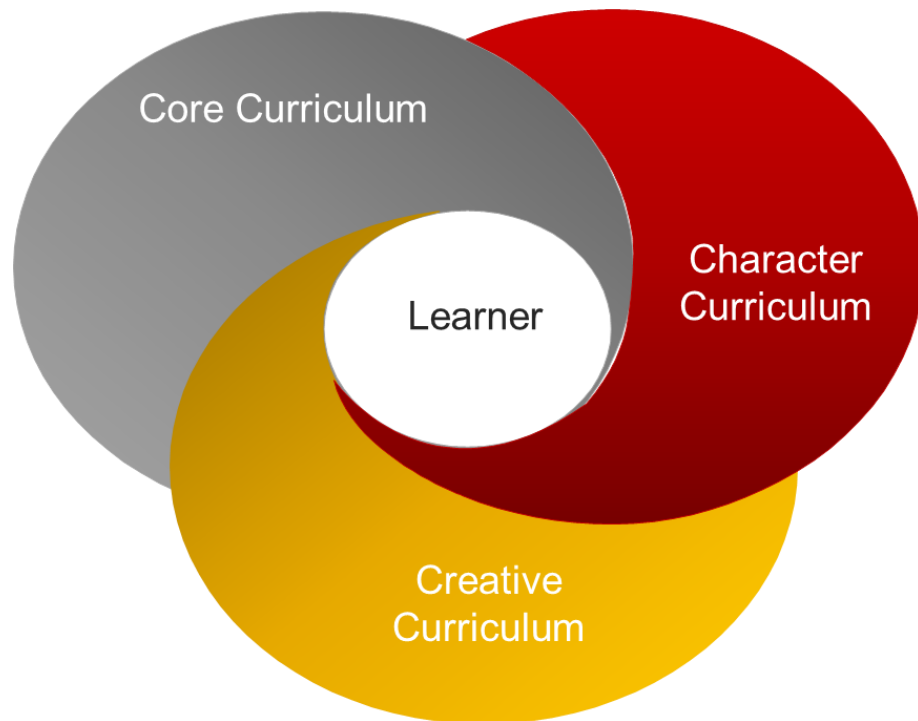
# Statutory and Corporate Priorities

## Statutory Duty – DFE 2013 Guidance

Local Authorities are responsible for arranging education for children who are unable to attend their usual place of education due to ill health

Hampshire Aims	Children and Young People's Plan
Hampshire maintains strong and sustainable economic growth and prosperity (SH1)	My Health (CYPP1)
People in Hampshire love safe, health and independent lives (SH2)	My Relationship (CYPP2)
People in Hampshire enjoy a rich and diverse environment (SH3)	My Future (CYPP3)
People in Hampshire enjoy being part of strong, inclusive, resilient communities (SH4)	My Family (CYPP4)

# Empowering Young People through education, to enable transition and reintegration.



# Service Developments 2022-2023

- Identified as an independent service area
- Collaboration with: Virtual school, social care, HIEP, Speech and Language team, Hampshire Music Service and Cultural Trust
- Decrease in refusal / unauthorised absence rates
- Increase in GCSE entries
- Increase in curriculum and qualification offer
- Ofsted – Good grading at Swanwick Lodge



# Swanwick Lodge – Good Ofsted Outcome Across All Areas

- “broad and bespoke curriculum is in place to meet the individual needs and interests of the children”
- “Through well-planned and innovative lessons, children make good progress.”
- “Children successfully achieve a variety of accredited units across a wide range of subjects, including independent and life skills”
- “Education, health, and care staff work successfully together to support children in their learning, including those with very complex needs.”
- “These activities help to develop children’s academic skills and broaden their understanding of the wider world”

# Internal Comparator Development

- Refusals and Unauthorised Absence

Year	Swanwick	AH / BH	Leigh	Future
2021 – 2022	13%	15%	8%	22%
2022 - 2023	4%	13%	7%	21%

- Stakeholder Feedback

	<i>Austen</i>		<i>Bluebird</i>		<i>Leigh House</i>		<i>Swanwick</i>		<i>Future You</i>	
	Response Number	Quality of Education Average	Response Number	Quality of Education Average	Response Number	Quality of Education Average	Response Number	Quality of Education Average	Response Number	Quality of Education Average
2021 – 22 Autumn	17	4.08	14	4.03	11	4.06	6	4.80	54	4.24
2021 – 22 Summer	17	4.35	12	4.25	14	3.62	18	4.46	38	3.90
2022 – 23 Autumn	21	4.00	22	4.00	13	3.82	17	4.00	41	3.95
2022 – 23 – Summer	27	4.30	19	3.90	17	4.10	23	3.92	57	4.19

# Future You

Schools 79%  
 SEN 18%  
 Virtual School / Social Care 3%

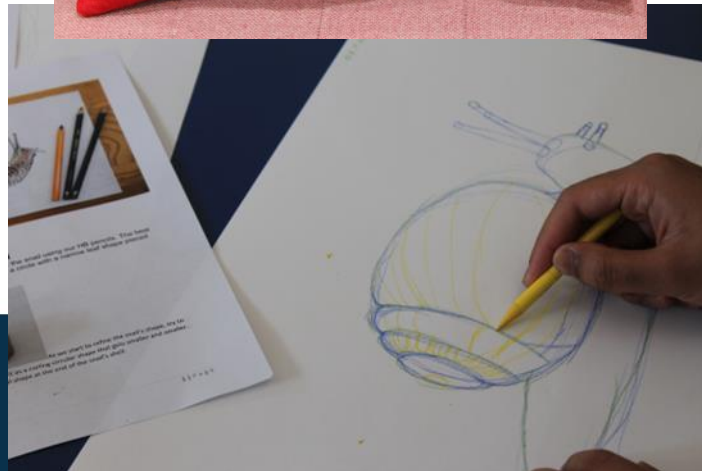
- Learner Numbers

Sept 22	Oct 22	Nov 22	Dec 22	Jan 23	Feb 23	March 23	April 23	May 23
81	80	79	78	80	87	82	90	92
<i>Learners with EHCPs - 28% (26)</i>					<i>Learners who are Looked after - 10% (9)</i>			

- Reintegration Numbers

<i>Number of learners returned to school</i>		
		52% (41 out of 79)
<i>Mainstream returners</i>	<i>Special school returners</i>	<i>Alternative provision returners</i>
39% (16)	34% (14)	27% (11)

<i>Provision ended for home education</i>	<i>Provision ended as learner moved out of area</i>	<i>Provision ended as inappropriate for the learner – poor attendance or engagement</i>	<i>Provision ended as learner too unwell to access anything</i>	<i>Provision ended as learner referred to another agency</i>
2% (2)	5% (4)	35% (28)	4% (3)	1% (1)





# Contacts and Further Information

**Laura Hamson**

**Head of Service, Secure and Specialist Education**

Participation & Lifelong Learning, Children's Services Directorate

**Tel:** 07926 077448 | **Email:** [laura.hamson@hants.gov.uk](mailto:laura.hamson@hants.gov.uk)

**Andy Tickner**

**County Education Manager (Interim) - Participation & Lifelong Learning**

Hampshire County Council, Children's Services Department

**Tel:** 07834 123163 | **Email:** [andy.tickner@hants.gov.uk](mailto:andy.tickner@hants.gov.uk)